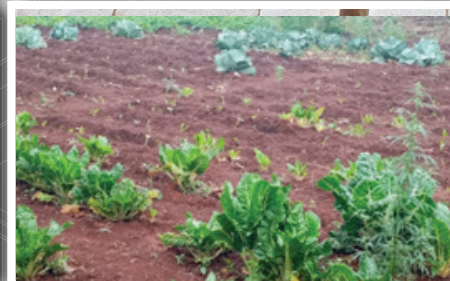
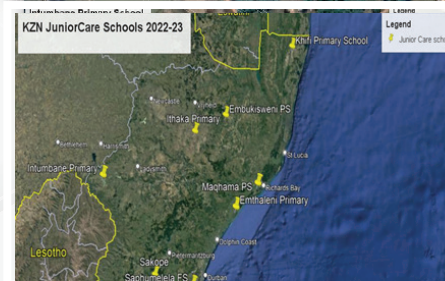




Figure 3: Certificate of Appreciation handover

PROJECT PROFILE

EMBUKISWENI PRIMARY SCHOOL



Summarised profile

Name of the school	Embukisweni Primary School
Type of project	School vegetable garden
Province	KwaZulu-Natal
District	Zululand District
Municipality	ULundi Local Municipality
GPS coordinates	S: 31.2235.4, E: 27. 5940.4
Year of project establishment	2022/2023
Year of intervention by Government	2022
Number of learners in the school	225
Number of learners involved in the project	225
Grade/grades involved in the project	Grade 1 to Grade 7

BACKGROUND OF THE PROJECT

Embukisweni Primary School is located in Ulundi, KwaZulu-Natal, in the KwaCeza area in the ULundi Local Municipality under the Zululand District. The number of learners from Grade R to Grade 7 enrolled at the school is 225 and there are nine educators at the school. The school is currently utilising arable land, growing vegetables and maize. The school uses rain water as the source of water and practices water conservation through water harvesting using water tanks. The Department of Agriculture and Rural Development (DARD) supports the school with seedlings, seeds, fertiliser and some garden tools.

PROJECT ACTIVITIES AND ACHIEVEMENT

Year	Funding	Activities	Achievements
2022/23	LandCare conditional grant contribution	<ul style="list-style-type: none"> Fencing delivered Environment Day awareness The school hosted Arbor Day Seeds 	Activities were delivered to the school as per their request on the application form

PROJECT BENEFITS FOR THE SCHOOL

- Vegetable produce planted in the school garden is harvested and then used in the school feeding scheme programme.

PROJECT BENEFITS FOR THE LEARNERS

- The surplus is afterwards given to learners from vulnerable households.

PROJECT BENEFITS FOR THE COMMUNITY

- There are community members that are currently using part of the school garden to grow vegetables.

PROJECT BUDGET

- The project was given R300000 by LandCare conditional grant contribution for the implementation of all their activities.

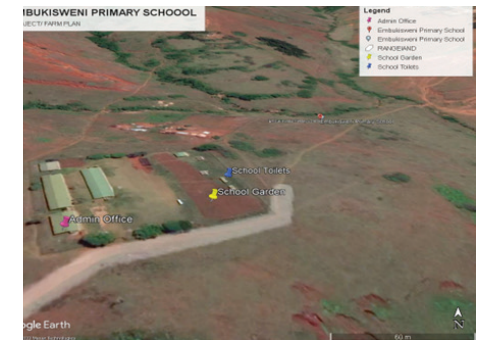
GENERAL PROJECT CHALLENGES

- Water shortages

PROJECT/FARM MAP



Figure 1: Embukisweni Primary School plans



A SNAPSHOT OF THE PROJECT: PHOTOS



Figure1: School garden



Figure 2: Arbor Day tree planting