



Department of Agriculture, Land Reform and Rural Development: Directorate Inspection Services  
Private Bag X258, Pretoria, 0001

Enquiries: Mr L Molepo/Ms P Sambo  
PetuniaS@dalrrd.gov.za

Tel: (+27)012 309 8753/011 971 5117 E-mail:

## **WOOD-PACKAGING MATERIAL (DUNNAGE) IN INTERNATIONAL TRADE**

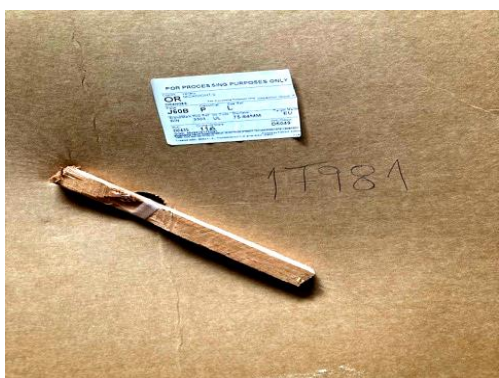
A call is made to all exporters, importers and all other role players participating in the international trading of agricultural and non-agricultural products using wood packaging material. The wood packaging material needs to comply with ISPM 15 (International Standard for Phytosanitary Measures - Guidelines for regulating wood packaging material in international trade).

1. All wood packaging materials (WPM) including dunnage, moving between the Republic of South Africa (SA) and other countries are subject to official checks and should meet ISPM 15 regulatory requirements.
2. Wooden dunnage in its raw form poses a very high pest risk if not treated and marked according to methods prescribed under ISPM 15 regulation.
3. Dunnage is wood packaging material used to secure or support a commodity, however, which does not remain associated with the commodity (ISPM 15)
4. Dunnage includes items such as load boards, bracing within cargo

containers, and other loose wood used in securing a cargo during transit. For example:

- Dunnage is often used on bulk bins when packing fruits, in marine vessels to stabilize consignment.
  - Brace cargo during ocean transport or to stabilize pallets inside the container.
5. When the cargo is discharged at the port, the dunnage may be separated from the cargo and left at the port or treated as international waste.
  6. Role players need to choose the right type of dunnage material depending on the items they need to ship to avoid notification non-compliance associated with wood packaging material from our trading partners.
  7. ISPM 15- Guidelines for regulating wood-packaging material in international trade can be accessed on:  
<http://www.fao.org/3/mb160e/mb160e.pdf>

### **Non-Complying Dunnage**



### **Complying Dunnage**

